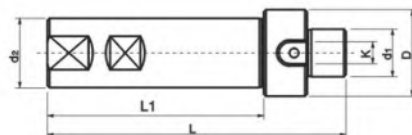


配件 E
FITTING E





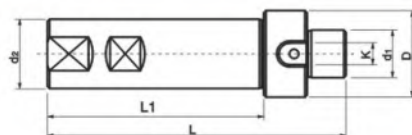
C-FMA 直柄面铣刀杆 (英制)
C-FMA Face mill extension (English)



型号 Cat.No	尺寸 Size						
	d1	d2	D	L1	L	K	
20 C20-FMA25.4-60	25.4	20	47	60	100	9.25	
32	C32-FMA25.4-60	25.4	32	47	60	100	9.25
	-FMA25.4-100	25.4	32	47	100	140	9.25
	-FMA25.4-150	25.4	32	47	150	190	9.25
	-FMA25.4-200	25.4	32	47	200	240	9.25
	C42-FMA25.4-60	25.4	42	47	60	100	9.25
42	-FMA25.4-100	25.4	42	47	100	140	9.25
	-FMA25.4-150	25.4	42	47	150	190	9.25
	-FMA25.4-200	25.4	42	47	200	240	9.25



C-FMB 直柄面铣刀杆 (公制)
C-FMB Face mill extension (Metric)



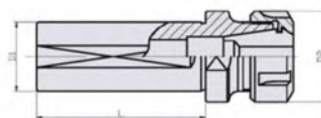
型号 Cat.No	尺寸 Size						
	d1	d2	D	L1	L	K	
20 C20-FMB22-60	22	20	47	60	98	10	
32	C32-FMB22-60	22	32	47	60	98	10
	-FMB22-100	22	32	47	100	138	10
	-FMB22-150	22	32	47	150	188	10
	-FMB22-200	22	32	47	200	238	10
	C42-FMB22-60	22	42	47	60	98	10
42	-FMB22-100	22	42	47	100	138	10
	-FMB22-150	22	42	47	150	188	10
	-FMB22-200	22	42	47	200	238	10
	-FMB27-60	27	42	60	60	100	12
	-FMB27-100	27	42	60	100	140	12
	-FMB27-150	27	42	60	150	190	12
	-FMB27-200	27	42	60	200	240	12



车床专用ER弹性筒夹刀柄
Special lathe elasticity of ER collet the handle



端口跳动 $5\mu\text{m}$ 以内



- 适用于数控车床，安装常用钻头、铰刀、丝锥等刀具
- 以下规格均不含扳手及筒夹，如有需要请另行订购

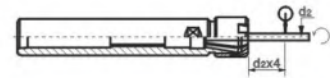
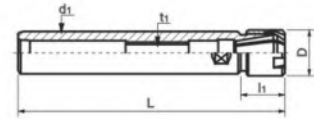
型号 Cat.No	尺寸 Size				夹头 Collet Chucks
	D1	D2	L	Range	
SL16-ER11-55	16	19	55	0.5-6	ER11
SL16-ER16-55	16	30	55	1-10	ER16
SL20-ER11-60	20	19	60	0.5-6	ER11
SL20-ER16-60	20	30	60	1-10	ER16
SL20-ER20-60	20	34	60	1-13	ER20
SL25-ER16-58	25	30	58	1-10	ER16
SL25-ER20-58	25	34	58	1-13	ER20
SL25-ER25-58	25	42	58	1-16	ER25
SL32-ER20-85	32	34	85	1-13	ER20
SL32-ER25-85	32	42	85	1-16	ER25
SL32-ER32-85	32	50	85	3-20	ER32
SL32-ER40-85	32	63	85	4-26	ER40
SL40-ER25-85	40	42	85	1-16	ER25
SL40-ER32-85	40	50	85	3-20	ER32
SL40-ER40-85	40	63	85	4-26	ER40
SL50-ER32-85	50	50	85	3-20	ER32
SL50-ER40-85	50	63	85	4-26	ER40



ER延长杆 (M/UM型)
ER Extension (M/UM type)



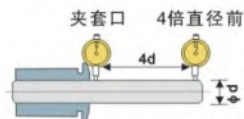
端口跳动5 μm以内



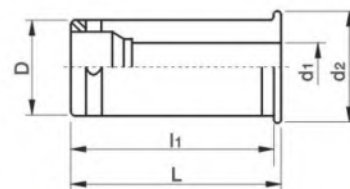
型号 Cat.No	尺寸 Size				把握直径 Chucking Dia
	L	L1	D	d1	
C10-ER11-100A	121.6	21.6	19	10	1.0~7.0
C12-ER11-100A	121.6	21.6	19	12	1.0~7.0
C16-ER11-100A	121.6	21.6	19	16	1.0~7.0
C16-ER11-150A	171.6	21.6	19	16	1.0~7.0
C16-ER16-100A	135.1	35.1	20	16	1.0~10
C16-ER16-150A	185.1	35.1	20	16	1.0~10
C20-ER16-100A	135.1	35.1	20	20	1.0~10
C20-ER16-150A	185.1	35.1	20	20	1.0~10
C20-ER16-200A	235.1	35.1	20	20	1.0~10
C20-ER20-100A	135.1	40.5	25	20	1.0~13
C20-ER20-150A	185.1	40.5	25	20	1.0~13
C20-ER20-200A	235.1	40.5	25	20	1.0~13
C10-ER8-100M	115.5	15.5	12	10	0.5~5.0
C10-ER8-150M	165.5	15.5	12	10	0.5~5.0
C12-ER11-100M	130.5	30.5	16	12	1.0~7.0
C12-ER11-150M	180.5	30.5	16	12	1.0~7.0
C16-ER16-100M	139.5	39.5	22	16	1.0~10.0
C16-ER16-150M	189.5	39.5	22	16	1.0~10.0
C16-ER16-200M	239.5	39.5	22	16	1.0~10.0
C20-ER16-100M	139.5	39.5	22	20	1.0~10.0
C20-ER16-150M	189.5	39.5	22	20	1.0~10.0
C20-ER16-200M	239.5	39.5	22	20	1.0~10.0
C20-ER20-100M	144.5	44.5	28	20	1.0~10.0
C20-ER20-150M	194.5	44.5	28	20	1.0~10.0
C20-ER20-200M	244.5	44.5	28	20	1.0~10.0
C25-ER25-100UM	152	52	42	25	2.0~16.0
C25-ER25-150UM	202	52	42	25	2.0~16.0
C32-ER25-100UM	155	52	42	32	2.0~16.0
C32-ER25-150UM	202	52	42	32	2.0~16.0
C32-ER32-100UM	155	55	50	32	3.0~20.0
C32-ER32-150UM	205	55	50	32	3.0~20.0
C32-ER32-200UM	255	55	50	32	3.0~20.0



强力筒夹
Power milling



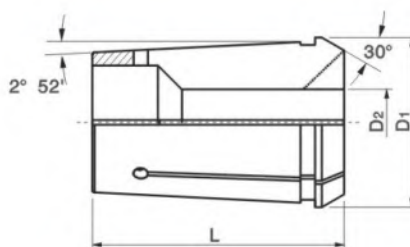
夹套等级	跳动精度 (MAX.mm)	
	夹套口	4倍直径前
AA级	0.005	0.01



规格 Taper	型号 Cat.No	尺寸 Size			
		D	d2	L	L1
C20	3,4,5,6,8,10,12,16	20	25	52.5	49
C25	6,8,10,12,16,20	25	30	59	56
C32	6,8,10,12,16,20,25,15,19,24	32	37.5	65	67.4
C32	1/4,5/16,3/8,1/2,3/4,5/8,1"	32	37.5	65	67.4
C42	6,8,10,12,16,20,25,32, 15,19,24	42	47	80	76
C42	1/4,5/16,3/8,1/2,5/8,3/4,1"	42	47	80	76



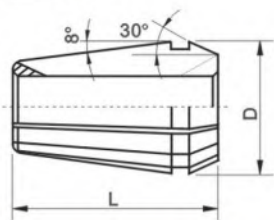
OZ弹性筒夹
OZ Spring collets



规格 Taper	型号 Cat.No
OZ-25	6,8,10,12,16,20,25MM 3,4,5,7,9,11,13,18MM
OZ-25	1/8", 3/16", 1/4", 5/16", 3/8", 7/16", 1/2", 9/16" 5/8", 11/16", 3/4", 13/16", 7/8", 15/16", 1"

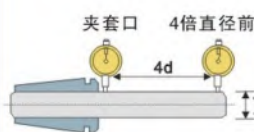


ER 弹性筒夹
ER Spring collets



规格 Tper	D	L	RANGE
ER8	8.5	13.5	0.5
ER11	11.5	18	0.5
ER16	17	27.5	1.0
ER20	21	31.5	1.0
ER25	26	34	1.0
ER32	33	40	1.0
ER40	41	46	1.0

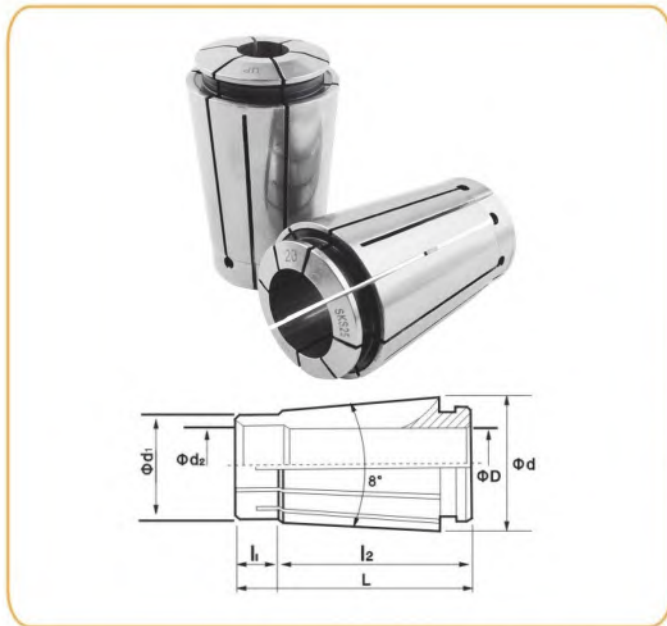
夹套等级	跳动精度 (MAX.mm)	
	夹套口	4倍直径前
A级	0.005	0.01
普通级	0.01	0.015



ER8		ER16		ER25		ER32		ER40	
型号 Cat.No	夹持 Clamping	型号 Cat.No	夹持 Clamping	型号 Cat.No	夹持 Clamping	型号 Cat.No	夹持 Clamping	型号 Cat.No	夹持 Clamping
0.5	0.5	1.0	0.5~1.0	2.0	1.0~2.0	3.0	2.0~3.0	6.0	5.0~6.0
1.0	0.5~1.0	2.0	1.0~2.0	3.0	2.0~3.0	4.0	3.0~4.0	7.0	6.0~7.0
1.5	1.0~1.5	3.0	2.0~3.0	4.0	3.0~4.0	5.0	4.0~5.0	8.0	7.0~8.0
2.0	1.5~2.0	4.0	3.0~4.0	5.0	4.0~5.0	6.0	5.0~6.0	9.0	8.0~9.0
2.5	2.0~2.5	5.0	4.0~5.0	6.0	5.0~6.0	7.0	6.0~7.0	10.0	9.0~10.0
3.0	2.5~3.0	6.0	5.0~6.0	7.0	6.0~7.0	8.0	7.0~8.0	11.0	10.0~11.0
3.5	3.0~3.5	7.0	6.0~7.0	8.0	7.0~8.0	9.0	8.0~9.0	12.0	11.0~12.0
4.0	3.5~4.0	8.0	7.0~8.0	9.0	8.0~9.0	10.0	9.0~10.0	13.0	12.0~13.0
4.5	4.0~4.5	9.0	8.0~9.0	10.0	9.0~10.0	11.0	10.0~11.0	14.0	13.0~14.0
5.0	4.5~5.0	10.0	9.0~10.0	11.0	10.0~11.0	12.0	11.0~12.0	15.0	14.0~15.0
ER11		ER20		12.0	11.0~12.0	13.0	12.0~13.0	16.0	15.0~16.0
1.0	0.5~1.0	1.0	0.5~1.0	13.0	12.0~13.0	14.0	13.0~14.0	17.0	16.0~17.0
1.5	1.0~1.5	2.0	1.0~2.0	14.0	13.0~14.0	15.0	14.0~15.0	18.0	17.0~18.0
2.0	1.5~2.0	3.0	2.0~3.0	15.0	14.0~15.0	16.0	15.0~16.0	19.0	18.0~19.0
2.5	2.0~2.5	4.0	3.0~4.0	16.0	15.0~16.0	17.0	16.0~17.0	20.0	19.0~20.0
3.0	2.5~3.0	5.0	4.0~5.0			18.0	17.0~18.0	21.0	20.0~21.0
3.5	3.0~3.5	6.0	5.0~6.0			19.0	18.0~19.0	22.0	21.0~22.0
4.0	3.5~4.0	7.0	6.0~7.0			20.0	19.0~20.0	23.0	22.0~23.0
4.5	4.0~4.5	8.0	7.0~8.0					24.0	23.0~24.0
5.0	4.5~5.0	9.0	8.0~9.0					25.0	24.0~25.0
5.5	5.0~5.5	10.0	9.0~10.0					26.0	25.0~26.0
6.0	5.5~6.0	11.0	10.0~11.0						
6.5	6.0~6.5	12.0	11.0~12.0						
7.0	6.5~7.0	13.0	12.0~13.0						

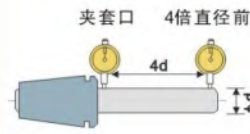


SK 筒夹
SK Collet



规格 Tper	ϕD	L	ϕC	L1	H
SK 6	7.5	25	10	17.6	3.8
SK 10	12	30.5	15	21.3	5
SK 16	18.8	45	24	32	8
SK 25	28.9	57	35	43	8.5

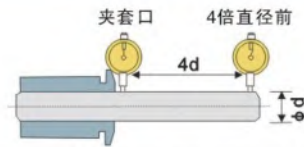
夹套等级	跳动精度 (MAX.mm)	
	夹套口	4倍直径前
A级	0.001	0.005
普通级	0.005	0.01



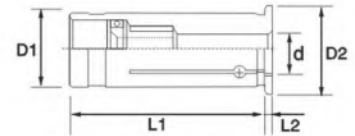
型号 Cat.No	夹持 Clamping	型号 Cat.No	夹持 Clamping	型号 Cat.No	夹持 Clamping	型号 Cat.No	夹持 Clamping
SK 6-0.8	0.7~0.8	SK 10-2.0	1.75~2.0	SK d16-3.0	2.75~3.0	SK 25-16.5	16.0~16.5
SK 6-1.0	0.9~1.0	SK 10-2.25	2.0~2.25	SK 16-3.5	3.0~3.5	SK 25-17.0	16.5~17.0
SK 6-1.25	1.1~1.25	SK 10-2.5	2.25~2.5	SK 16-4.0	3.5~4.0	SK 25-17.5	17.0~17.5
SK 6-1.5	1.25~1.5	SK 10-2.75	2.5~2.75	SK 16-4.5	4.0~4.5	SK 25-18.0	17.5~18.0
SK 6-1.75	1.5~1.75	SK 10-3.0	2.8~3.0	SK 16-5.0	4.5~5.0	SK 25-18.5	18.0~18.5
SK 6-2.0	1.75~2.0	SK 10-4.0	3.0~3.5	SK 16-5.5	5.0~5.5	SK 25-19.0	18.5~19.0
SK 6-2.25	2.0~2.25	SK 10-4.5	3.5~4.0	SK 16-6.0	5.5~6.0	SK 25-19.5	19.0~19.5
SK 6-2.5	2.25~2.5	SK 10-5.0	4.5~5.0	SK 16-6.5	6.0~6.5	SK 25-20.0	19.5~20.0
SK 6-2.75	2.5~2.75	SK 10-5.5	5.0~5.5	SK 16-7.0	6.5~7.0	SK 25-20.5	20.0~20.5
SK 6-3.0	2.8~3.0	SK 10-6.0	5.5~6.0	SK 16-7.5	7.0~7.5	SK 25-21.0	20.5~21.0
SK 6-3.5	3.0~3.5	SK 10-6.5	6.0~6.5	SK 16-8.0	7.5~8.0	SK 25-21.5	21.0~21.5
SK 6-4.0	3.5~4.0	SK 10-7.0	6.5~7.0	SK 16-8.5	8.0~8.5	SK 25-22.0	21.5~22.0
SK 6-4.5	4.0~4.5	SK 10-7.5	7.0~7.5	SK 16-9.0	8.5~9.0	SK 25-22.5	22.0~22.5
SK 6-5.0	4.5~5.0	SK 10-8.0	7.5~8.0	SK 16-9.5	9.0~9.5	SK 25-23.0	22.5~23.0
SK 6-5.5	5.0~5.5	SK 10-8.5	8.0~8.5	SK 16-10.0	9.5~10.0	SK 25-23.5	23.0~23.5
SK 6-6.0	5.5~6.0	SK 10-9.0	8.5~9.0	SK 16-10.5	10.0~10.5	SK 25-24.0	23.5~24.0
		SK 10-9.5	9.0~9.5	SK 16-11.0	10.5~11.0	SK 25-24.5	24.0~24.5
			9.5~100	SK 16-11.5	11.0~11.5	SK 25-25.0	24.5~25.0
				SK 16-12	11.5~12.0	SK 25-25.4	25.0~25.4
				SK 16-12.5	12.0~12.5		
				SK 16-13	12.5~13.0		
				SK 16-13.5	13.0~13.5		
				SK 16-14.0	13.5~14.0		
				SK 16-14.5	14.0~14.5		
				SK 16-15.0	14.5~15.0		
				SK 16-15.5	15.0~15.5		
				SK 16-16.0	15.5~16.0		



液压筒夹
Hydraulic collet



夹套等级	跳动精度 (MAX.mm)	
	夹套口	4倍直径前
AA级	0.005	0.01



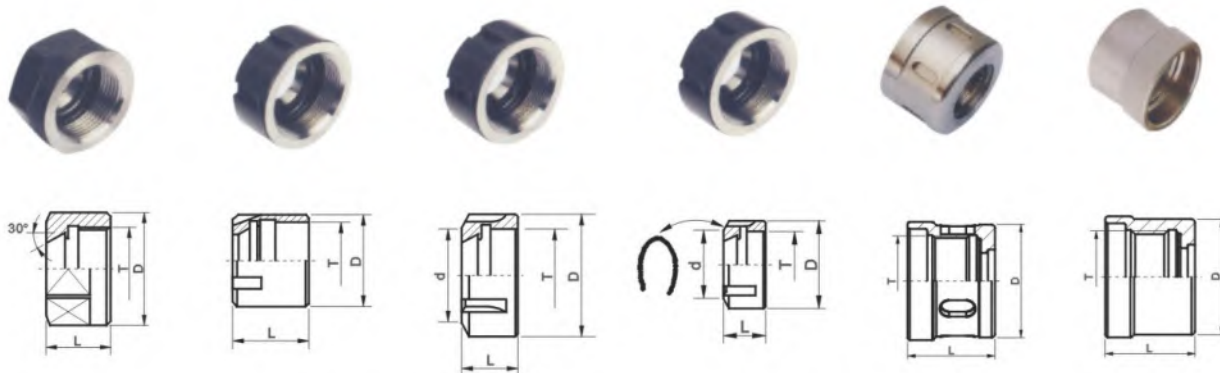
型号 Cat.No		尺寸 Size					
		D1	D2	L1	L2	d	
HM12	HM12-3	12	16	44.5	2	3	
	-4	12	16	44.5	2	4	
	-5	12	16	44.5	2	5	
	-6	12	16	44.5	2	6	
	-7	12	16	44.5	2	7	
	-8	12	16	44.5	2	8	
	HM20	HM20-3	20	24	50.5	2	3
-4		20	24	50.5	2	4	
-5		20	24	50.5	2	5	
-6		20	24	50.5	2	6	
-7		20	24	50.5	2	7	
-8		20	24	50.5	2	8	
-9		20	24	50.5	2	9	
-10		20	24	50.5	2	10	
-11		20	24	50.5	2	11	
-12		20	24	50.5	2	12	
-13		20	24	50.5	2	13	
-14		20	24	50.5	2	14	
-15		20	24	50.5	2	15	
-16		20	24	50.5	2	16	
-17		20	24	50.5	2	17	
HM32		HM32-6	32	36	60.5	3	6
		-8	32	36	60.5	3	8
	-10	32	36	60.5	3	10	
	-12	32	36	60.5	3	12	
	-14	32	36	60.5	3	14	
	-16	32	36	60.5	3	16	
	-18	32	36	60.5	3	18	
	-20	32	36	60.5	3	20	
	-25	32	36	60.5	3	25	

● 采用直身设计
适用于液压刀柄

● Uses the straight body design
Is suitable for the hydraulic pressure hilt



螺帽
Clamping nut



A型
A Type

M型
M Type

UM/RD型
UM/RD Type

KM/RD型
KM/RD Type

HER型
HER Type

SD型
SD Type

样式 Manner	型号 Cat.No	尺寸 Size			
		D	d	L	T
A	ER11A-LM	19	17	11.3	M14×0.45P
	ER16A-LM	28	25	17.5	M22×1.5P
	ER20A-LM	34	30	19	M25×1.5P
M	ER8M-LM	12	-	10.8	M10×0.75P
	ER11M-LM	16	-	12	M13×0.75P
	ER16M-LM	22	-	18	M19×1.0P
	ER20M-LM	28	-	19	M24×1.0P
	ER25M-LM	35	-	20	M30×1.0P
UM/RD	ER25UM-LM	42	29	20	M32×1.5P
	ER32UM-LM	50	38.5	22.5	M40×1.5P
	ER40UM-LM	63	48.3	22.5	M50×1.5P
	ER50UM-LM	78	59	35.5	M64×2.0P
KM/RD	ER25KM-LM	42	29	22.5	M32×1.5P
	ER32KM-LM	50	38.5	26	M40×1.5P
	ER40KM-LM	63	48.3	29	M50×1.5P
	ER50KM-LM	78	59	40	M64×2.0P
HER	HER16-LM	32	26	18	M22×1.5P
	HER20-LM	36	30	20	M25×1.5P
	HER25-LM	42	36	22.5	M32×1.5P
	HER32-LM	50	44	25	M40×1.5P
SD	SD6-LM	20	-	21	M15×1.0P
	SD10-LM	27	-	24	M22×1.0P
	SD16-LM	40	-	31	M32×1.5P
	SD25-LM	55	-	37	M45×2.0P



ER 型扳手
ER Spanner



CODE NO	D	L	N
ER11A-BS	ER11	32.0	95
ER16A-BS	ER16	44.0	144
ER20A-BS	Er20	52.5	144

CODE NO	MODEL	A	B
ER25UM-BS	ER25	65	210
ER32UM-BS	ER32	75	250
ER40UM-BS	ER40	90	290
ER50UM-BS	Er50	110	350

CODE NO	MODEL	A	B
ER8M-BS	ER8	12.0	90
ER11M-BS	ER11	16.8	90
ER16M-BS	ER16	22.5	110
ER20M-BS	ER20	29.0	120
ER25M-BS	ER25	36.0	130

型号 Cat.No	SD6-BS	SD10-BS	SD16-BS	SD25-BS
专用螺帽	SD6-LM	SD10-LM	SD16-LM	SD25-LM

C 型扳手
C Spanner

型号 Cat.No	使用范围 Use scope	L	B	C	I
C20-BS	50-55	260	46	50-55	52
C32-BS	80-90	272	64	80-90	67
C42-BS	92-98	285	65	92-98	90



OZ 型扳手
OZ Spanner

型号 Cat.No	D1	规格 Taper
OZ25-BS	60	OZ25
OZ32-BS	76	OZ32





寻边器
Edge finder



编号 Serial Number	型号 Cat.No	柄径 Handle diameter	长度 Length	侧头 Gauge head	测径 Diameter
01	WH-120	10Φ	90	±0.002	10Φ
02	WH-1010	10Φ	90	±0.002	10Φ
03	SME-420	10Φ	90	±0.005	40Φ 10Φ
04	OP-20	20Φ	160	±0.005	10Φ
05	KL-4010	10Φ	90	±0.005	40Φ 10Φ
06	ME-1020	10Φ	90	±0.005	10Φ
07	HME-420	10Φ	90	±0.005	40Φ 10Φ
08	WH-1020A	10Φ	90	±0.002	10Φ



中心寻找表
Center for table



订货号 Order No	指示表 指示范围 Range Of Per Rev	mm(in)		
		直测杆长度 Length Of Straight Feeler	中心测杆长度 Length Of Centre Point Feeler	弯测杆长度 Length Of Curved Feeler
0421.002	0~3mm	45mm	52.5mm	46mm
		100mm		100mm
		154mm		154mm
0421.001	0~0.12in	1.77in	2.07in	1.81in
		4in		4in
		6.06in		6.06in



Z轴设定器
The Z axis set device



(Z-01)



(Z-02)



(Z-03)



(Z-04)

编号 Serial Number	型号 Cat.No	型式 Pattern	总高度 Gross altitude
Z-01	ZIP-50	量表式 (内藏)	50
Z-02	ZIP-50F	量表式 (内藏)	50
Z-03	ZOP-50	光电式 (内藏)	50
Z-04	ZIP-50A	量表式 (外置)	100



测试棒
Test bar



型号 Cat.No
BT30-TA250
BT40-TA300
BT50-TA400



锁刀座
Tool locking fixture



型号 Cat.No
BT30-S30
BT40-S40
BT50-S50
HSK63A-S63
HSK80A-S80



清洁棒
Spindle taper wiper



型号 Cat.No	重量 (KGS)
BT30-W30	0.05
BT40-W40	0.06
BT50-W50	0.13



万能夹具组
Omnipotent accessories group



型号 Cat.No
CA-12-58P
CA-16-58P
PA-1/2-58P
PA-5/8-58P



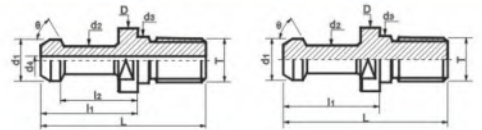
刀具管理车
Tool trolley



型号 Cat.NO	外观尺寸 Appearance Of Size	存放数量 Store The Number
DTC30	L920*W475*H775mm	可存放36支BT30刀把
DTC40	L920*W475*H775mm	可存放36支BT40刀把
DTC50	L920*W475*H775mm	可存放24支BT50刀把
DTC63	L920*W475*H775mm	可存放24支HSK63刀把



拉钉
Puller bolt

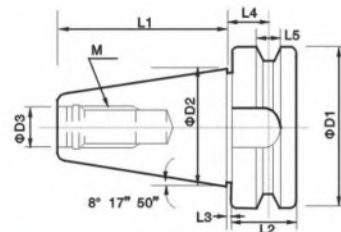
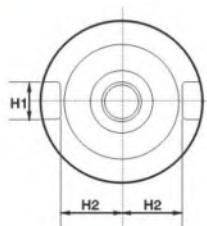


型号 Cat.No	D	d	D1	D2	L	E	G	Q	形式 Form	备注 Note
PS-1	15	23	17	10	60	35	M16	45	BT40-1标准型	MAS P40T-1
PS-2	15	23	17	10	60	35	M16	60	BT40-2标准型	MAS P40T-2
PS-3	19	31	21	14	70	40	M20	45	BT45-1标准型	MAS P45T-1
PS-4	19	31	21	14	70	40	M20	60	BT45-2标准型	MAS P45T-2
PS-5	23	38	25	17	85	45	M24	45	BT50-1标准型	MAS P50T-1
PS-6	23	38	25	17	85	45	M24	60	BT50-2标准型	MAS P50T-2
PS-16	11	16.5	12.5	7	43	23	M12	45	BT30-1标准型	MAS P30T-1
PS-17	11	16.5	12.5	7	43	23	M12	60	BT30-2标准型	MAS P30T-2
PS-18	13	20	28	8.5	48	28	M24	45	BT35-1标准型	MAS P35T-1
PS-19	13	20	28	8.5	48	28	M24	60	BT35-2标准型	MAS P35T-2
PS-5F	23	38	28	17	85	45	M24	45	BT50-1	PS-5端面研磨
PS-6F	23	38	28	17	85	45	M24	60	BT50-2	PS-6端面研磨
PS-50	23	38	28	17	110	70	M24	45	BT50	
PS-53	23	38	26.187	17	85.2	45.2	1-8UNC	45	CAT50U	
PS-63	23	38	26	17	85.2	45	1-8UNC	60	CAT50U	
PS-70	19	23	17	14	60	35	M16	45	BT40	
PS-72	15	23	16.281	10	57.15	32.15	5/8-11UNC	45	CAT40U	
PS-0	23	38	25	17	85	45	M24	90	BT50-90型	
PS-08-1	15	23	17	10	60	35	M16	90	BT40-90型	
PS-P	24	36	25	18	71	31	M24	90	BT50三井精机	
PS-P5-1	15	23	17	10	50	25	M16	90	BT40三井精机	
PS-P10	11	16	12.5	7	40	20	M12	90	BT30三井精机	
PS-U2	13.7	20	13	8.9	53	28	M24	60	BT35松浦机械	
PS-G4	23	38	25	17	85	45	M24	90	BT50马扎克	
PS-G5	15	23	17	10	54.6	29.6	M16	90	BT40马扎克	
PS-G45	28.956	37	25	20.828	65.2	25.2	M24	45	BT50马扎克端面研磨	PS-G41无孔
PS-G58	18.796	22	17	12.446	44.1	19.106	M16	45	BT40马扎克端面研磨	PS-G51无孔
PS-G60	18.796	21.8	16.281	12.446	41.256	16.256	5/8-11UNC	45	CAT40U 大限	
PS-019	23	38	-	17	85	45.2	1-8UNC	90	CAT50U	
PS-047	23	38	25	17	85	45	M24	90	IT50森精机	
PS-P13	24	36	-	18	71	31	1-8UNC	90	CAT50U三井精机	
PS-H30	15	23	16.281	10	57.2	32.2	5/8-11UNC	45	CAT40U日立精机	
PS-B1	22	38	25	16	112	72	M24	60	BT50大限	
PS-809	28	23	17	21	74	34	M24	75	BT50端面研磨	JIS-B6339-89
PS-805	19	23	17	14	54	29	M16	75	BT40端面研磨	JIS-B6339-89
PS-801	12	16.5	12.5	8	43	23.4	M12	75	BT30端面研磨	JIS-B6339-89
PS-J	14	20	13		45	23	M12	90	BT35北村机械	
PS-M10	14	16	12.5	10	40	22	M12	45	CAT30S牧野精机	
PS-R3	10	18	13	7	43	25	M12	45	BT35碌碌产业	
PS-C	21	39	25	15	105.1	63.1	M24	45	BT50日立精工	
PS-301	15	23	17	11	60	35	M16	60	BT40津上	
PS-Q3	16	16.5	12.5	2.5	31.8	11.8	M12	45	BT30	
PS-BR*1	7	10	6.5	4	28	17	M6	45	BT15兄弟工业	
PS-81	12	16.5	12.5	8	44	24	M12	R4	BT30CKD用	DIN69872-B-1988
PS-581	28	36	25	21	74	34	M24	75	IT50	DIN69872-A-1988
PS-302	19	23	17	14	54	26	M16	75	IT40	DIN69872-A-1988
PS-122	13	17	13	9	44	24	M12	75	IT30	
PS-S27	18.95	22.5	17	12.925	44.25	19.25	M16	45	BT15新日本工机	

- 中心通油型机床在使用无中心孔拉钉是，请使用端面研磨拉钉。
- 拉钉一体弄及PS-BR拉钉推荐使用BT15细杆刀柄。
- 需要附ID的拉钉时，请在型号后加ID表示例：PS-6-IDB。
- PS-814废除统一用PS-805。PS-P5废除统一用PS-P5-1。
- PS-08废除统一用PS-08-1。
- The center passes the oil-type engine bed when uses the non-center bore puller bolt, please do use the end surface to grind the puller bolt.
- When needs to attach ID the puller bolt, please at model add-on ID table demonstration: PS-6-IDB
- Puller bolt body makes and the PS-BR puller bolt recommendation uses BT15 thin pole hilt.
- PS-814 abolishes the unification to use PS-805. PS-P5 abolishes the unification to use PS-P5-1
- PS-08 abolishes the unification to use PS-08-1.



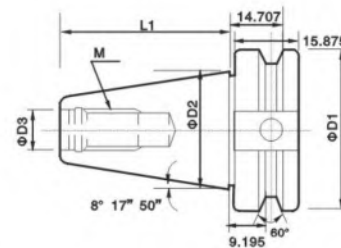
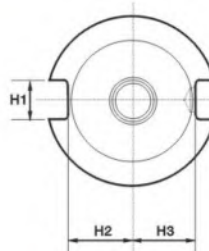
BT锥柄规格尺寸
BT bit holder specification size



BT.NO	$\Phi D1$	$\Phi D2$	$\Phi D3$	L1	L2	L3	L4	L5	H1	H2	M
BT30	46	31.75	12.5	48.4	20	3	13.6	8	16.1	16.3	M12
BT40	63	44.45	17	65.4	25		16.6	10		22.6	M16
BT50	100	69.85	25	101.8	35	2	23.2	15	25.7	35.4	M24



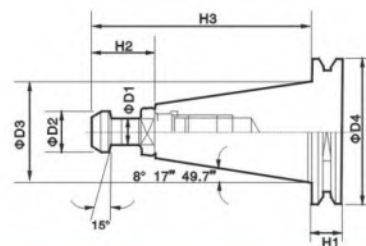
CAT锥柄规格尺寸
CAT bit holder specification size



CAT.NO	$\Phi D1$	$\Phi D2$	$\Phi D3$	L1	H1	H2	H3	M
CAT40	63.5	44.45	16.28	68.25	16.28	22.6	25.02	5/8" -11UNC
CAT50	98.43	69.85	26.38	101.6	305.31	35.31	37.72	1" ' -8UNC



ISO锥柄规格尺寸
ISO bit holder specification size



ISO.NO	D1	D2	D3	D4	H1	H2	H3
ISO20	6	9	22.225	33	8	12	45.3
ISO25	7	10	25.4	37	8	16	55.7
ISO30	9	13	31.75	50	15.9	24	71.8



海纳精密切削科技股份有限公司

HEINER PRECISION MACHINING TECHNOLOGY CO., LTD.

海纳精密机械有限公司

HEINER PRECISION MACHINERY CO., LTD.

地址：陕西省西安市莲湖区大庆路3号

Add: No.3 Daqing Road, Lianhu District, Xi'an, Shaanxi Province

Tel: 029-81333283

Fax: 029-84110636

E-mail: hanatool@163.com

www.nc360.net



Hai na now!

