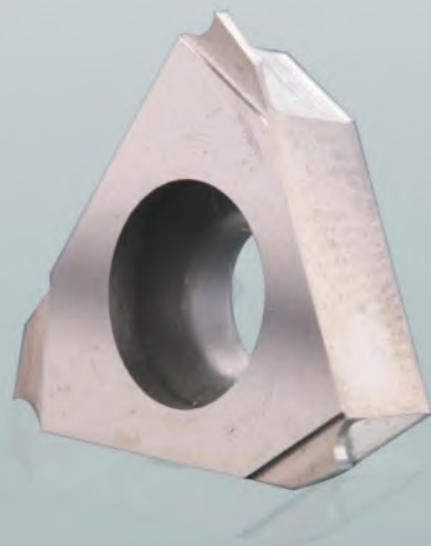
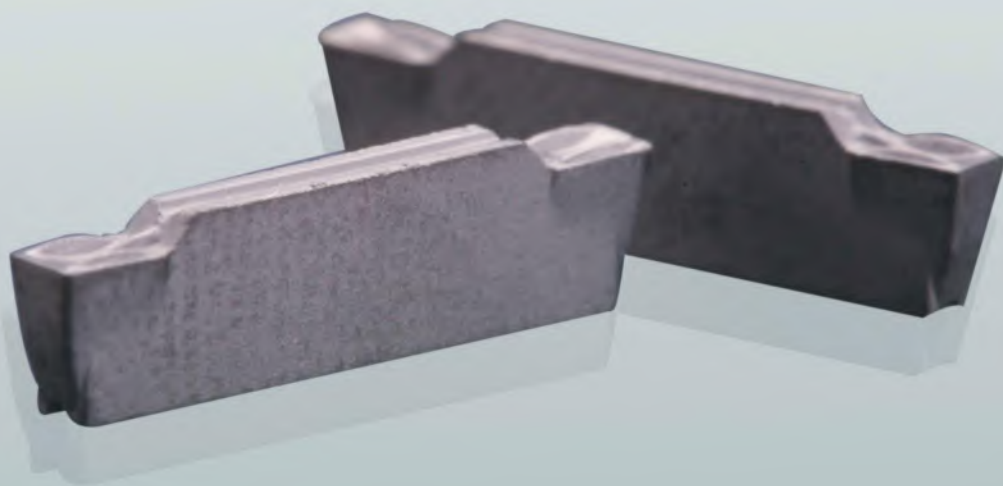


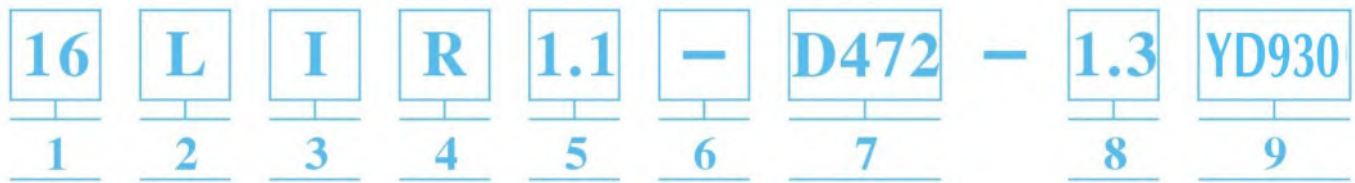
# 切槽刀片 D

GROOVING INSERT

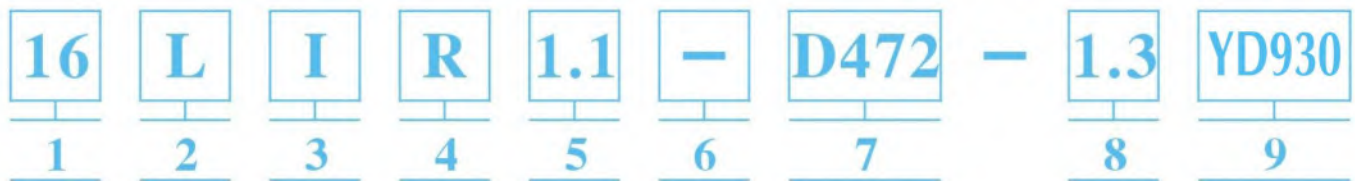




型号说明 Vardex Ordering Code System



<b>1</b> 刀片尺寸	<b>3</b> 刀片类型	<b>6</b> 外型型式	<b>8</b> 切槽深度
IC=08 IC=11 IC=16 IC=22 IC=27	E=外径 I=内径	C-全齿型	0.33-2.0 (mm)
<b>2</b> 刀片形状	<b>4</b> 左/右手刀片	<b>7</b> 槽形标准	<b>9</b> 刀片牌号
S:型 L:型	R-右手刀片 L-左手刀片	DIN 471 Partial DIN 471 DIN 472Partial DIN 472 DIN 7993Partial DIN 7993 DIN 76 ST, DIN 76SH DIN 3770	YD930 通用类材质 KW10 K类材质
<b>5</b> 切槽刀标准宽度			
0.8-2.15 (mm)			

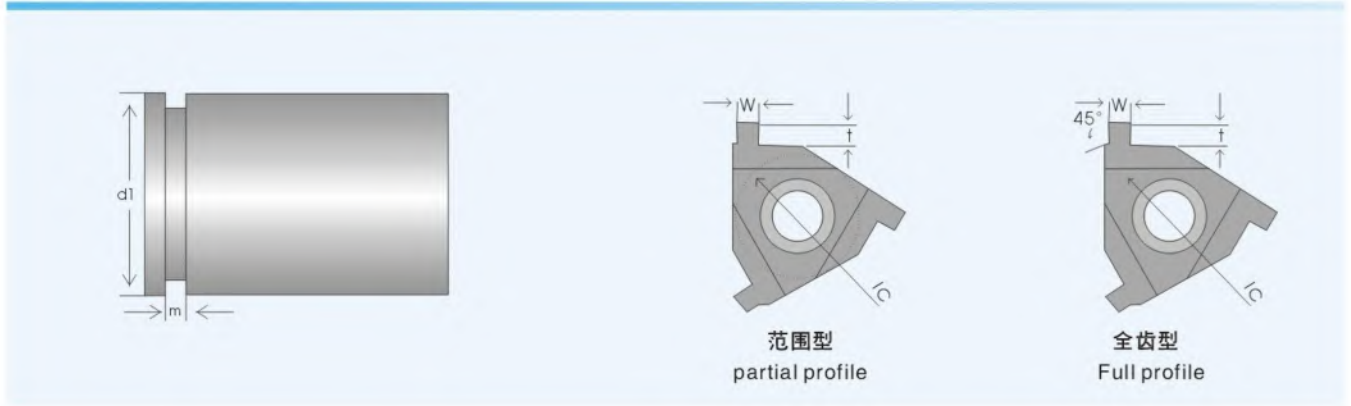


<b>1</b> Insert Size	<b>3</b> Type of Insert	<b>6</b> Type of Insert	<b>8</b> Groove Depth
IC=08 IC=11 IC=16 IC=22 IC=27	E:External Thread I:Internal Thread	C-The whole toothType	0.33-2.0 (mm)
<b>2</b> Insert Style	<b>4</b> Hand of Insert	<b>7</b> Groove Standard	<b>9</b> Carbide grade
S: type L: type	R:Right-hand L:Left-hand	DIN 471 Partial DIN 471 DIN 472Partial DIN 472 DIN 7993Partial DIN 7993 DIN 76 ST, DIN 76SH DIN 3770	YD930 General KW10 K-Cst iron
<b>5</b> Groove std. Width			
0.8-2.15 (mm)			

D 刀片系列  
Insert Series



DIN471 标准轴用弹性挡圈槽  
DIN471 Retaining Ring Groovers for shafts



标准型刀片 (范围型)  
Standard (partial profile)

刀片尺寸 IC	订货号 Ordering code	槽标准 Groove Std		尺寸 Size (mm)		图例 Diagram
		M (H13)		W	t	
3/8	16ER1.10-D471-1.30...	1.10		1.19	1.3	
	16ER1.13-D471-1.50...	1.30		1.39	1.5	
	16ER1.16-D471-1.85...	1.60		1.69	1.8	
	16ER1.85-D471-2.00...	1.85		1.94	2.0	



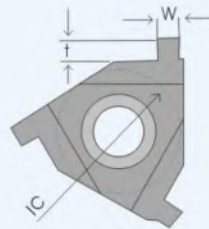
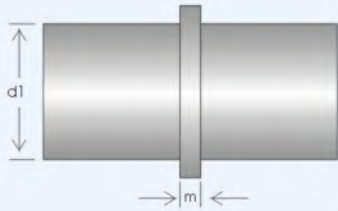
标准型刀片 (全齿型)  
Standard (Full profile)

刀片尺寸 IC	订货号 Orderingcode	槽标准 Groove Std		尺寸 Size (mm)			图例 Diagram
		M (H13)	d1	W	t1	t	
3/8	16ER1.10-D471-0.35...	1.10	15	1.10	0.33	0.33	
	16ER1.10-D471-0.40...	1.10	16-17	1.10	0.36	0.36	
	16ER1.30-D471-0.50...	1.30	18-22	1.30	0.44	0.44	
	16ER1.30-D471-0.55...	1.30	24-26	1.30	0.45	0.45	
	16ER1.60-D471-0.70...	1.60	28-30	1.60	0.60	0.60	
	16ER1.60-D471-0.85...	1.60	32-34	1.60	0.75	0.75	
	16ER1.60-D471-1.00...	1.60	35	1.60	0.85	0.85	
	16ER1.85-D471-1.00...	1.85	36-38	1.85	0.85	0.85	
	16ER1.85-D471-1.25...	1.85	40-48	1.85	1.10	1.10	
	16ER2.15-D471-1.50...	2.15	50-63	2.15	1.35	1.35	

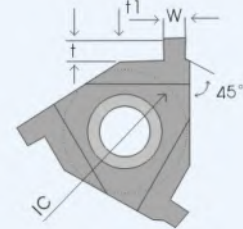




DIN471 标准轴用弹性挡圈槽  
DIN471 Retaining Ring Groovers for shafts



范围型  
partial profile



范围型  
Full profile



标准型刀片 (范围型)  
Standard (partial profile)

刀片尺寸 IC	订货号 Ordering code	槽标准 Groove Std		尺寸 Size (mm)			图例 Diagram
		M (H13)		W	t		
3/8	16IR1.10-D472-1.30...	1.10		1.19	1.3		
	16IR1.13-D472-1.50...	1.30		1.39	1.5		
	16IR1.16-D472-1.85...	1.60		1.69	1.8		
	16IR1.85-D472-2.00...	1.85		1.94	2.0		



标准型刀片 (全齿型)  
Standard (Full profile)

刀片尺寸 IC	订货号 Ordering code	槽标准 Groove Std		尺寸 Size (mm)			图例 Diagram
		M (H13)	d1	W	t1	t	
3/8	16IR1.10-D472-0.35...	1.10	15	1.10	0.33	0.33	
	16IR1.10-D472-0.40...	1.10	16-17	1.10	0.36	0.36	
	16IR1.30-D472-0.50...	1.30	18-22	1.30	0.44	0.44	
	16IR1.30-D472-0.55...	1.30	24-26	1.30	0.45	0.45	
	16IR1.60-D472-0.70...	1.60	28-30	1.60	0.60	0.60	
	16IR1.60-D472-0.85...	1.60	32-34	1.60	0.75	0.75	
	16IR1.60-D472-1.00...	1.60	35	1.60	0.85	0.85	
	16IR1.85-D472-1.00...	1.85	36-38	1.85	0.85	0.85	
	16IR1.85-D472-1.25...	1.85	40-48	1.85	1.10	1.10	
	16IR2.15-D472-1.50...	2.15	50-63	2.15	1.35	1.35	



### 立装外切槽刀片 External Grooving Inserts (V-Style)

图例 Diagram	型号 Order NO.	尺寸Size (mm)				
		a	b	d	d1	s
	16VEL1.10	1.10	0.9	9.525	4.4	3.97
	16VEL1.30	1.30	1.3	9.525	4.4	3.97
	16VEL1.80	1.60	1.4	9.525	4.4	3.97
	16VEL1.85	1.85	1.7	9.525	4.4	3.97
	16VEL2.15	2.15	2.0	9.525	4.4	3.97
	16VEL2.65	2.65	2.2	9.525	4.4	3.97

图例 Diagram	型号 Order NO.	尺寸Size (mm)				
		a	b	d	d1	s
	16VER1.10	1.10	0.9	9.525	4.4	3.97
	16VER1.30	1.30	1.3	9.525	4.4	3.97
	16VER1.80	1.60	1.4	9.525	4.4	3.97
	16VER1.85	1.85	1.7	9.525	4.4	3.97
	16VER2.15	2.15	2.0	9.525	4.4	3.97
	16VER2.65	2.65	2.2	9.525	4.4	3.97



### 立装内切槽刀片 Grving inserts (V-style)

图例 Diagram	型号 Order NO.	尺寸Size (mm)				
		a	b	d	d1	s
	11VIL1.10	1.10	1.5	6.350	2.8	2.38
	11VIL1.30	1.30	1.5	6.350	2.8	3.97
	16VIL1.10	1.10	0.9	9.525	4.4	3.97
	16VIL1.30	1.30	1.3	9.525	4.4	3.97
	16VIL1.80	1.60	1.4	9.525	4.4	3.97
	16VIL1.85	1.85	1.7	9.525	4.4	3.97
	16VIL2.15	2.15	2.0	9.525	4.4	3.97
	16VIL2.65	2.65	2.2	9.525	4.4	3.97

图例 Diagram	型号 Order NO.	尺寸Size (mm)				
		a	b	d	d1	s
	11VIR1.10	1.10	1.5	6.350	2.8	2.38
	11VIR1.30	1.30	1.5	6.350	2.8	3.97
	16VIR1.10	1.10	0.9	9.525	4.4	3.97
	16VIR1.30	1.30	1.3	9.525	4.4	3.97
	16VIR1.80	1.60	1.4	9.525	4.4	3.97
	16VIR1.85	1.85	1.7	9.525	4.4	3.97
	16VIR2.15	2.15	2.0	9.525	4.4	3.97
	16VIR2.65	2.65	2.2	9.525	4.4	3.97





平装切槽刀片Internal grooving inserts (Standard style)

图例 Diagram	型号 Order NO.	尺寸Size (mm)				
		a	b	d	d1	s
	16EL1.10	1.10	0.9	9.525	4.4	3.97
	16EL1.30	1.30	1.3	9.525	4.4	3.97
	16EL1.80	1.60	1.4	9.525	4.4	3.97
	16EL1.85	1.85	1.7	9.525	4.4	3.97
	16EL2.15	2.15	2.0	9.525	4.4	3.97
	16EL2.65	2.65	2.2	9.525	4.4	3.97

图例 Diagram	型号 Order NO.	尺寸Size (mm)				
		a	b	d	d1	s
	16ER1.10	1.10	0.9	9.525	4.4	3.97
	16ER1.30	1.30	1.3	9.525	4.4	3.97
	16ER1.80	1.60	1.4	9.525	4.4	3.97
	16ER1.85	1.85	1.7	9.525	4.4	3.97
	16ER2.15	2.15	2.0	9.525	4.4	3.97
	16ER2.65	2.65	2.2	9.525	4.4	3.97



平装切槽刀片Internal grooving inserts (Standard style)

图例 Diagram	型号 Order NO.	尺寸Size (mm)				
		a	b	d	d1	s
	11IL1.10	1.10	0.7	6.35	2.8	2.38
	16IL1.10	1.10	1.3	9.525	4.4	3.97
	16IL1.30	1.30	1.6	9.525	4.4	3.97
	16IL1.60	1.60	1.85	9.525	4.4	3.97
	16IL1.85	1.85	1.85	9.525	4.4	3.97
	16IL2.15	2.15	1.85	9.525	4.4	3.97

图例 Diagram	型号 Order NO.	尺寸Size (mm)				
		a	b	d	d1	s
	11IR1.10	1.10	0.7	6.35	2.8	2.38
	16IR1.10	1.10	1.3	9.525	4.4	3.97
	16IR1.30	1.30	1.6	9.525	4.4	3.97
	16IR1.60	1.60	1.85	9.525	4.4	3.97
	16IR1.85	1.85	1.85	9.525	4.4	3.97
	16IR2.15	2.15	1.85	9.525	4.4	3.97